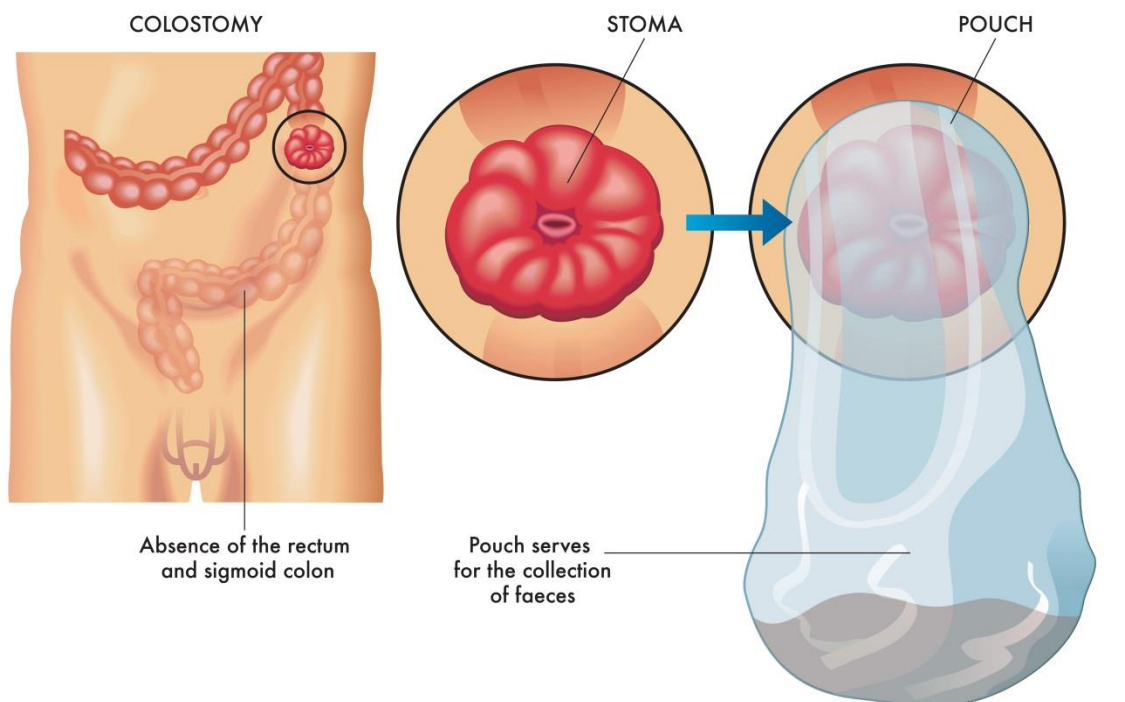


## Colostomy Resources

Colostomy is a surgical procedure that brings one end of the large intestine out through an opening (stoma) made in the abdominal wall. Stools moving through the intestine drain through the stoma into a bag attached to the abdomen, bypassing the rectum and anus.

A colostomy is a major surgery and the pros and cons should be weighed carefully. One pro often cited is that a colostomy can significantly cut down on the time spent on bowel care. The cons include the possibility of complications such as skin irritation, infection, and leakage among others.

Source: MedlinePlus



Graphic: cFotosearch.com

## Resources

<https://craighospital.org/resources/colostomies-a-radical-approach-to-bowel-management>  
**Craig Hospital: Colostomies - A Radical Approach to Bowel Management brochure**

<http://www.ostomyinternational.org/>  
**International Ostomy Association**  
See “Ostomy Help” section

<https://www.hopkinsmedicine.org/health/treatment-tests-and-therapies/colostomy>  
**Johns Hopkins Medicine: Colostomy**

<https://medlineplus.gov/ency/article/002942.htm>  
**Medline Plus: Colostomy**

<http://www.nlm.nih.gov/medlineplus/ostomy.html>  
**MedlinePlus: Ostomy**

<http://www.meetanostomate.org/>  
**Meet an OstoMate**  
An online community for people with ostomies to find friends, dates, etc.

<https://www.niddk.nih.gov/health-information/digestive-diseases/ostomy-surgery-bowel>  
**National Digestive Diseases Information Clearinghouse: Ostomy Surgery of the Bowel**

<http://www.newmobility.com/2014/04/colostomy-pros-cons/>  
**New Mobility: Colostomy Pros and Cons by Richard Holicky April 2014**

[http://www.ostomy.org/Ostomy\\_Information.html#colostomy](http://www.ostomy.org/Ostomy_Information.html#colostomy)  
**United Ostomy Associations of America: Ostomy Information and Care Guides**  
PO Box 525  
Kennebunk, ME 04043-0525  
Phone: 800-826-0826  
Scroll down for patient guides that can be printed out on colostomy, ileostomy, and urostomy.

<https://www.upmc.com/health-library/article?hwid=abn1985>  
**University of Pittsburgh Medical Center: Colostomy video**  
200 Lothrop St.  
Pittsburg, PA 15213-2582  
Phone: 412-647-8762

<https://www.upmc.com/health-library/article?hwid=ug2186>  
**University of Pittsburgh Medical Center: Living with an Ostomy**  
Includes a chart of foods that can cause problems with an ostomy

**The information contained in this message is presented for the purpose of educating and informing you about paralysis and its effects. Nothing contained in this message should be construed nor is intended to be used for medical diagnosis or treatment. It should not be used in place of the advice of your physician or other qualified health care provider. Should you have any health care related questions, please call or see your physician or other qualified health care provider promptly. Always consult with your physician or other qualified health care provider before embarking on a new treatment, diet or fitness program. You should never disregard medical advice or delay in seeking it because of something you have read in this message.**

This publication is supported by the Administration for Community Living (ACL), U.S. Department of Health and Human Services (HHS) as part of a financial assistance award totaling \$8,700,000 with 100 percent funding by ACL/HHS. The contents are those of the author(s) and do not necessarily represent the official views of, nor an endorsement, by ACL/HHS, or the U.S. Government.